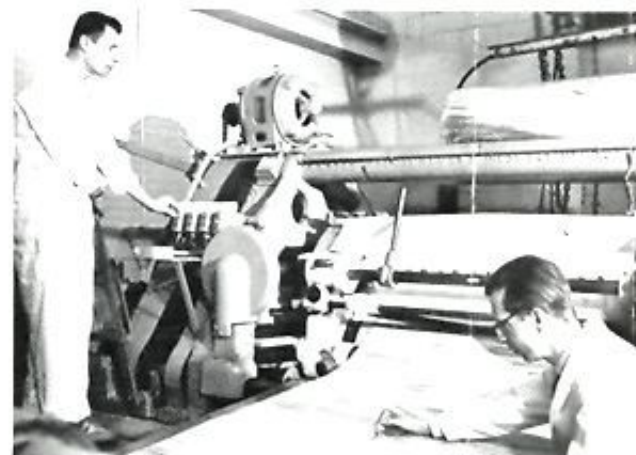


Many types of highly specialized equipment, suited to particular conditions, are effecting economies in forest operations—in time, labour and utilization.



◊ A double-cant gang saw in operation at an automated, high-production sawmill.



◊ Huge lathes, with razor-sharp blades, peel veneer as thin as paper from the log.

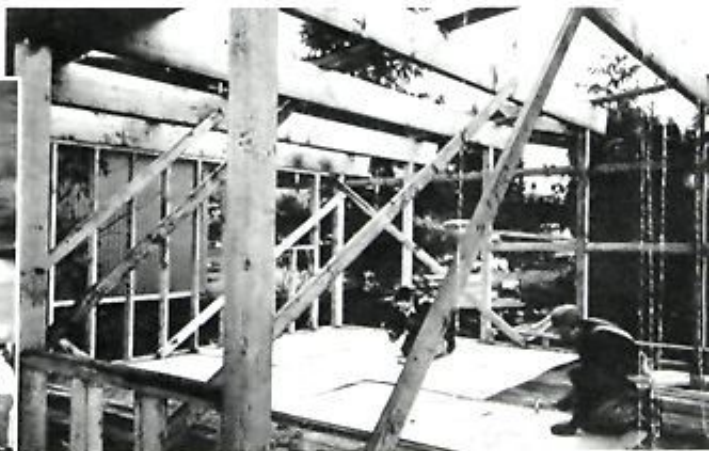


◊ A large integrated forest industrial complex on Canada's West Coast.

Mechanical loaders quickly and neatly fill the trucks with pulpwood.



◊ A full-tree harvester shears off, at ground level, trees up to 22" in diameter.



◊ Lumber and plywood are basic to house-building in Canada.



◊ A sprawler heel boom wields logs brought in by a portable metal spar.

